

# 30 PORT-DES-BARQUES

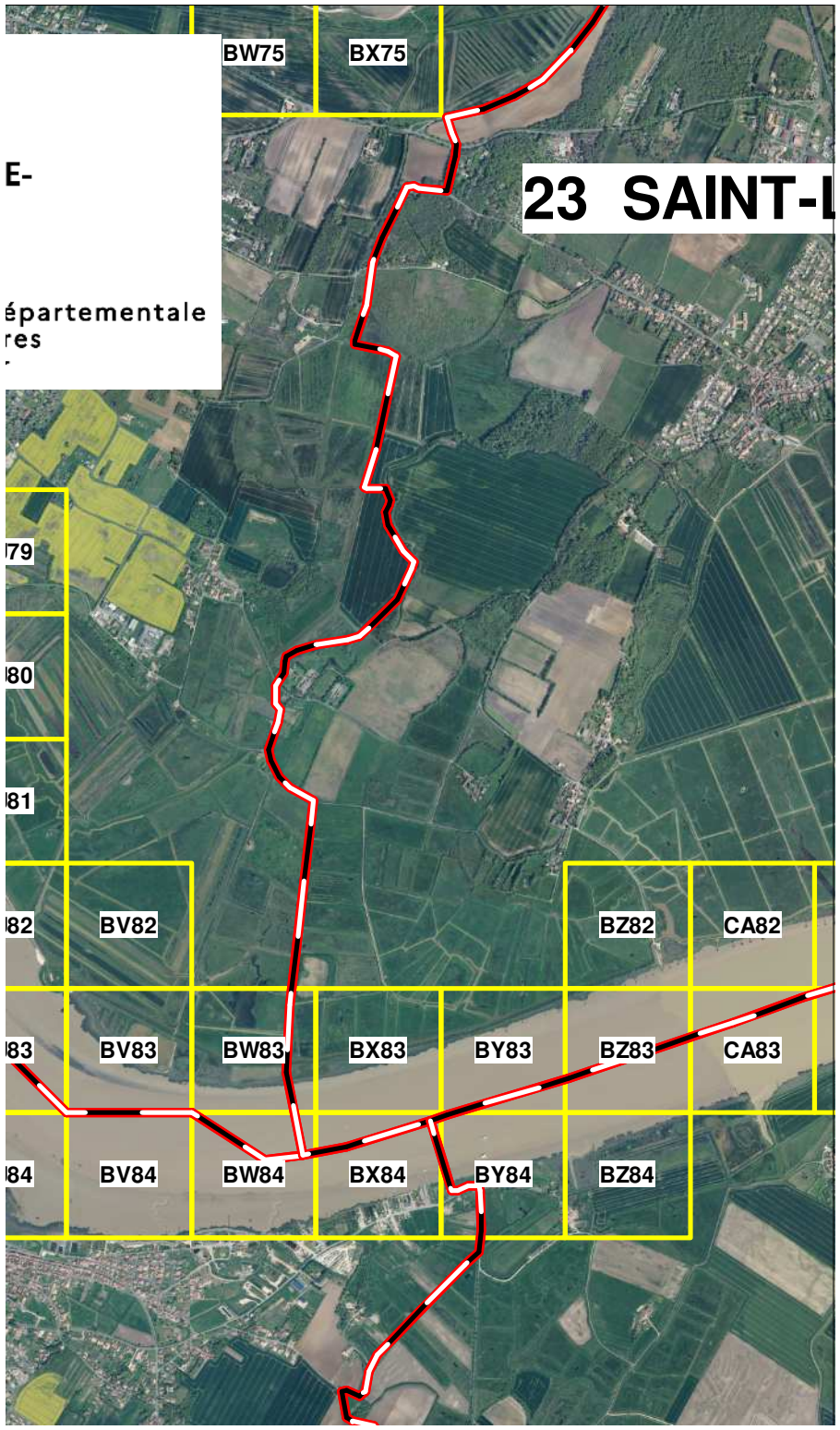
  
**PRÉFET  
DE LA  
CHARENTE  
MARITIME**  
*Liberté  
Égalité  
Fraternité*  
Direction de  
des territoires  
et de la mer

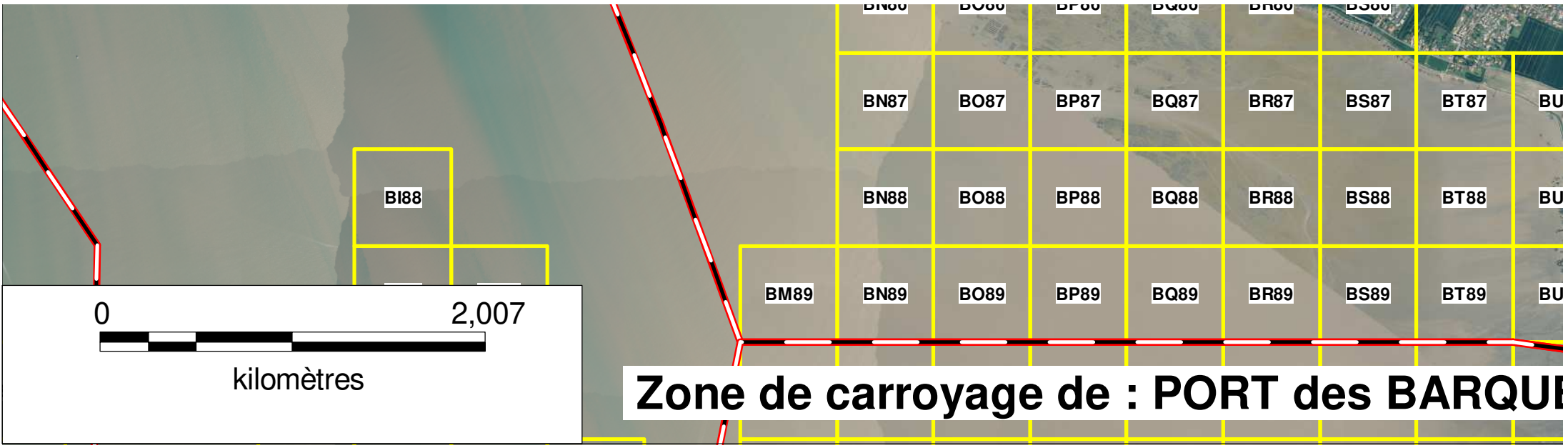


BJ78	BK78	BL78	BM78	BN78				BR78	BS78	BT78	BU78		
BJ79	BK79	BL79	BM79	BN79	BO79	BP79	BQ79		BS79	BT79	BU79		
BJ80	BK80	BL80	BM80	BN80	BO80	BP80	BQ80	BR80	BS80	BT80	BU80		
	BK81	BL81	BM81	BN81	BO81	BP81	BQ81	BR81	BS81	BT81	BU81		
		BL82	BM82	BN82	BO82	BP82	BQ82	BR82	BS82	BT82	BU82		
			BM83	BN83	BO83	BP83	BQ83	BR83	BS83	BT83	BU83		
				BM84	BN84	BO84	BP84	BQ84	BR84	BS84	BT84	BU84	
					BM85	BN85	BO85	BP85	BQ85	BR85	BS85	BT85	BU85
						BN86	BO86	BP86	BQ86	BR86	BS86	BT86	BU86

E-  
départementale  
res

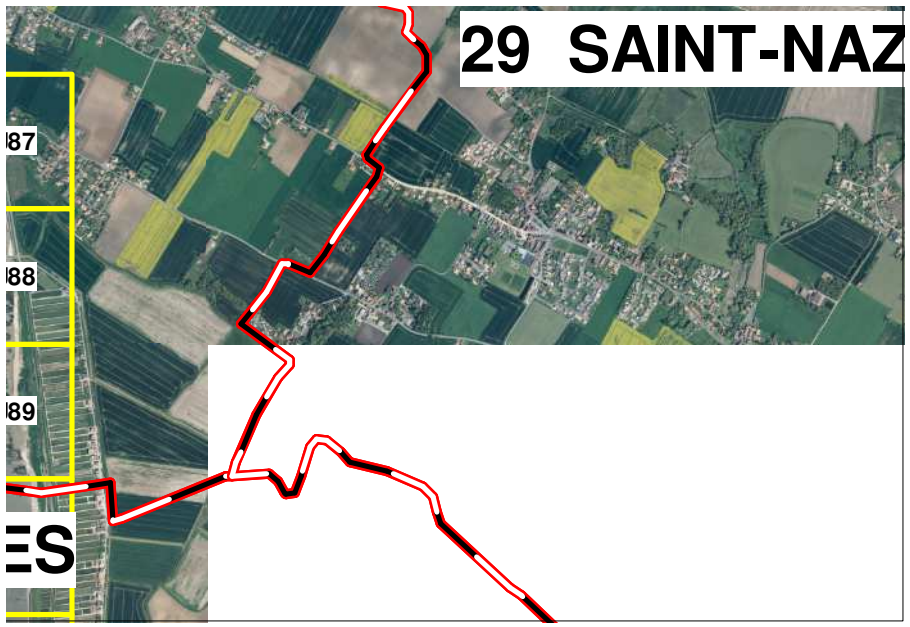
# 23 SAINT-L







# 29 SAINT-NAZ



87

88

89

≡ S